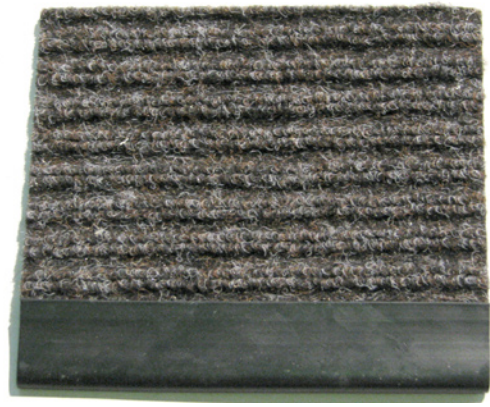
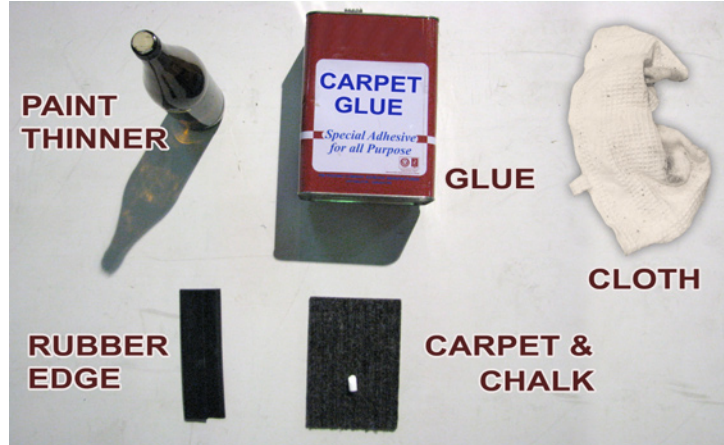


CHAMPION AND DEFENDER INSTALLATION GUIDE

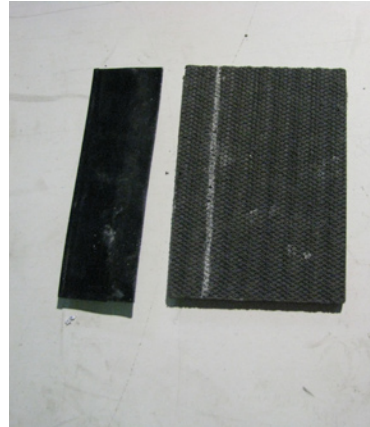


1. Tools and materials you need;

- a. Paint Thinner
- b. Glue
- c. Cloth
- d. Chalk
- e. Carpet and Rubber Edge



2. THE CHALK, Join the carpet and rubber edge and draw a line using the chalk. Later on the lines will be your guide on applying the thinner and glue.



3. THE THINNER, put thinner liquid on a cloth then apply and rub it on the carpet backing and rubber edge surface.



3. THE GLUE, put glue on the carpet and rubber edge surface. After putting the glue wait for a while and let it dry a bit then you can now join the carpet and rubber edge.

